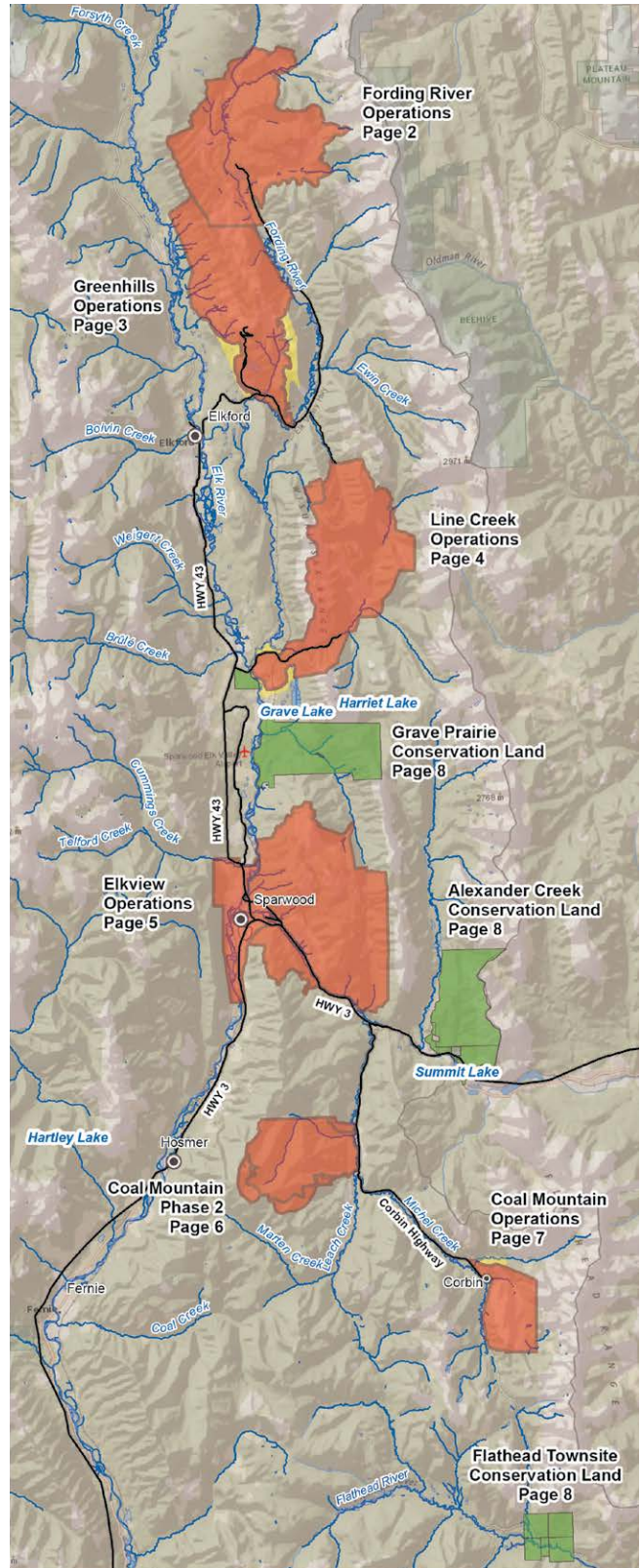




2015–16 Teck Safety Boundaries in the Elk Valley



For your safety and ours, please observe the no entry, no hunting and no shooting safety boundaries on Teck property in the Elk Valley. Electronic maps at: www.teck.com/elkvalleymaps

650000

655000

660000

Fording River Operations

For your protection and ours, observe and follow the No Unauthorized Entry, No Shooting and No Hunting boundaries.

Mining activities can start avalanches or rock slides without warning.

Maps should be used for reference only—follow field signage at all times.

Thank you for your cooperation in this matter.

Please be aware the 2015 boundary has changed in the Kilmarnock and Upper Fording River areas. Signage has been updated.

5570000

5570000

5565000

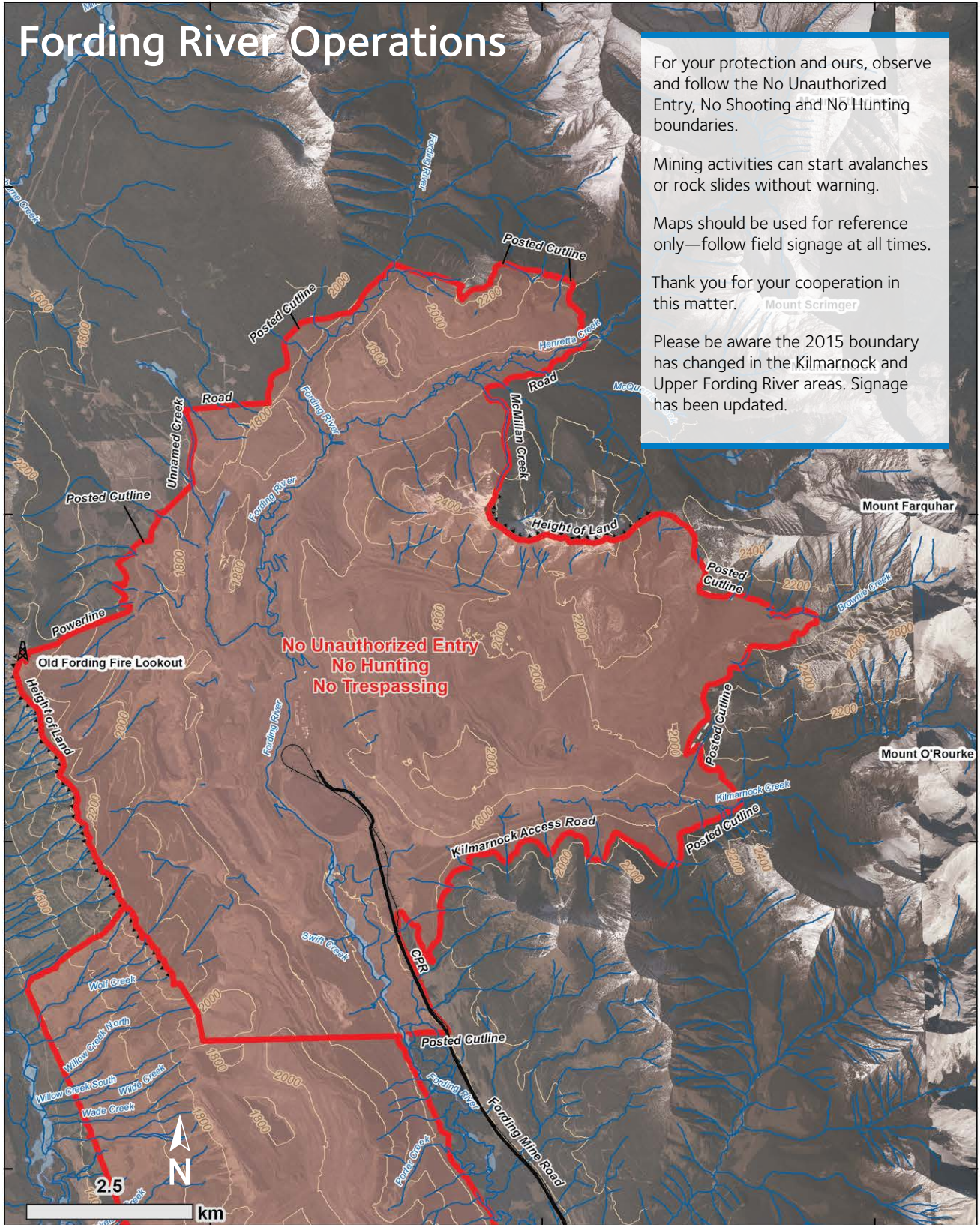
5565000

5560000

5560000

5555000

5555000



650000

655000

660000

For more information:

Go to the main gatehouse and contact Loss Prevention on the radio or call Loss Prevention at 250.865.5016.

650000

655000

Greenhills Operations

For your protection and ours, observe and follow the No Unauthorized Entry, No Shooting and No Hunting boundaries.

Mining activities can start avalanches or rock slides without warning.

Maps should be used for reference only—follow field signage at all times.

If wounded game crosses the safety boundary, do not follow. You must contact Greenhills Operations Loss Prevention for further instructions. Phone 250.865.3098 or 250.865.3042.

Thank you for your cooperation in this matter.

5555000

5555000

5550000

5550000

5545000

5545000

**No Unauthorized Entry
No Hunting
No Trespassing**

Bow Hunting Only

Bow Hunting Only

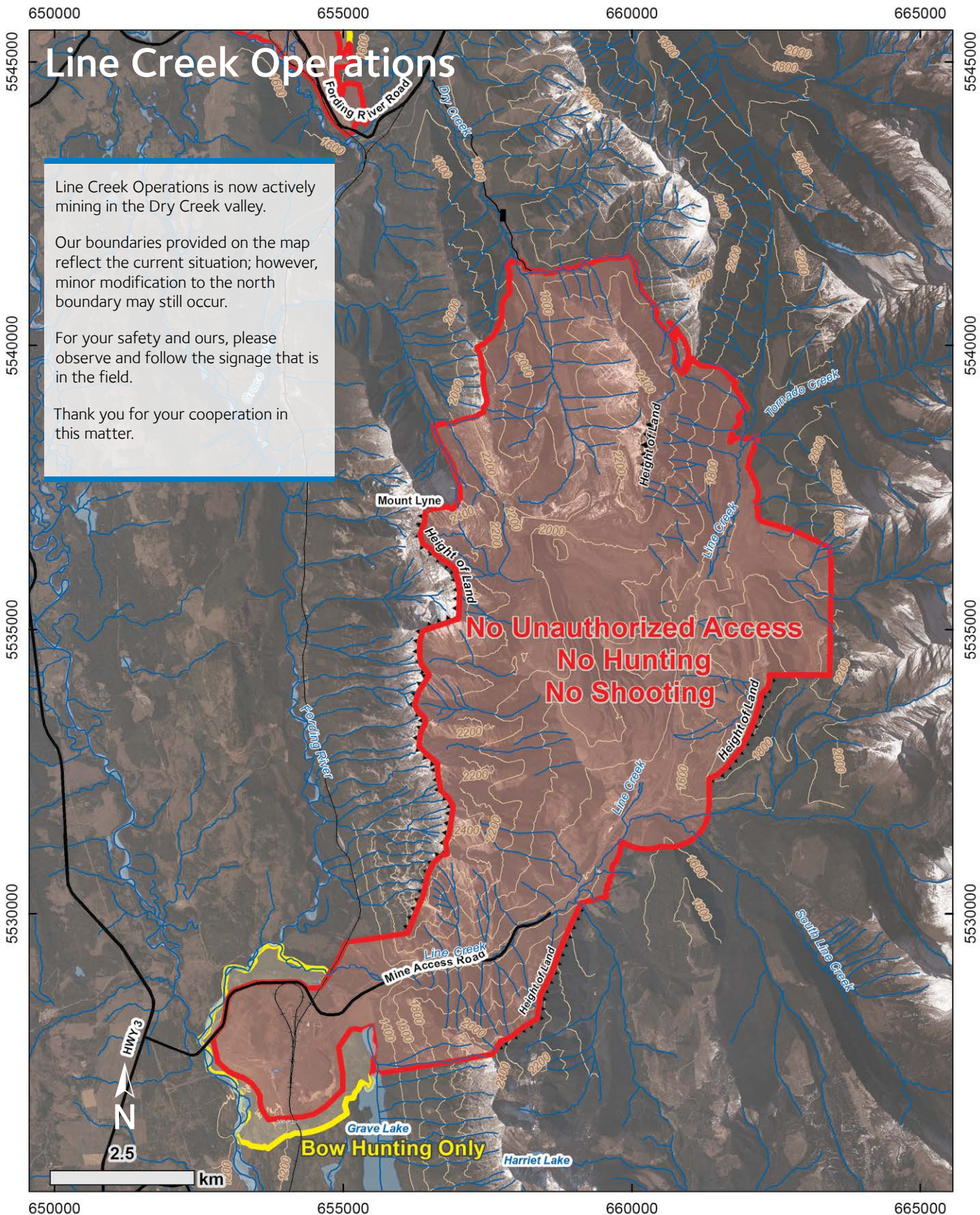


650000

655000

For more information:

Go to the main gatehouse and contact Loss Prevention on the radio or call Loss Prevention at 250.865.3042.



Line Creek Operations

Line Creek Operations is now actively mining in the Dry Creek valley.

Our boundaries provided on the map reflect the current situation; however, minor modification to the north boundary may still occur.

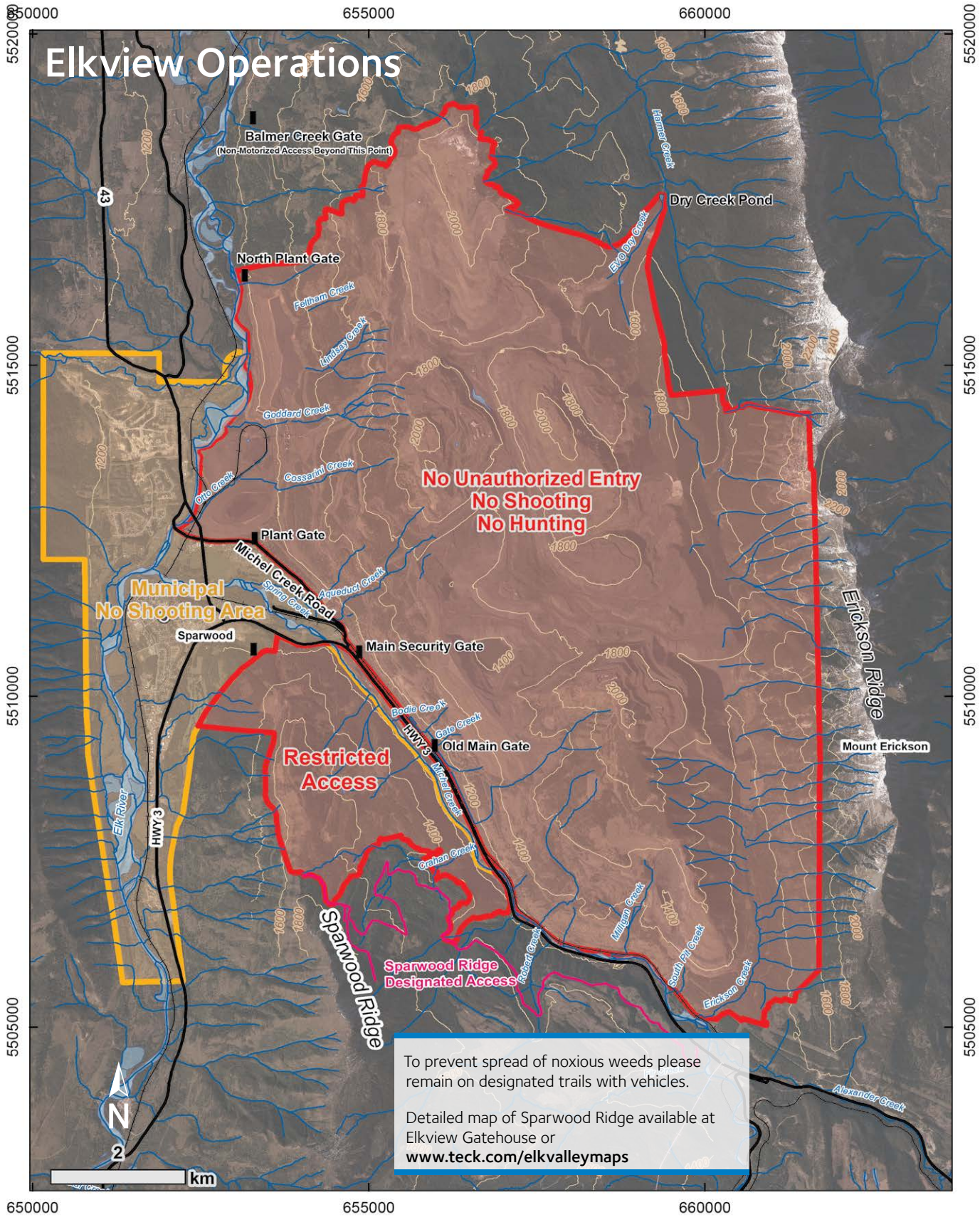
For your safety and ours, please observe and follow the signage that is in the field.

Thank you for your cooperation in this matter.

**No Unauthorized Access
No Hunting
No Shooting**

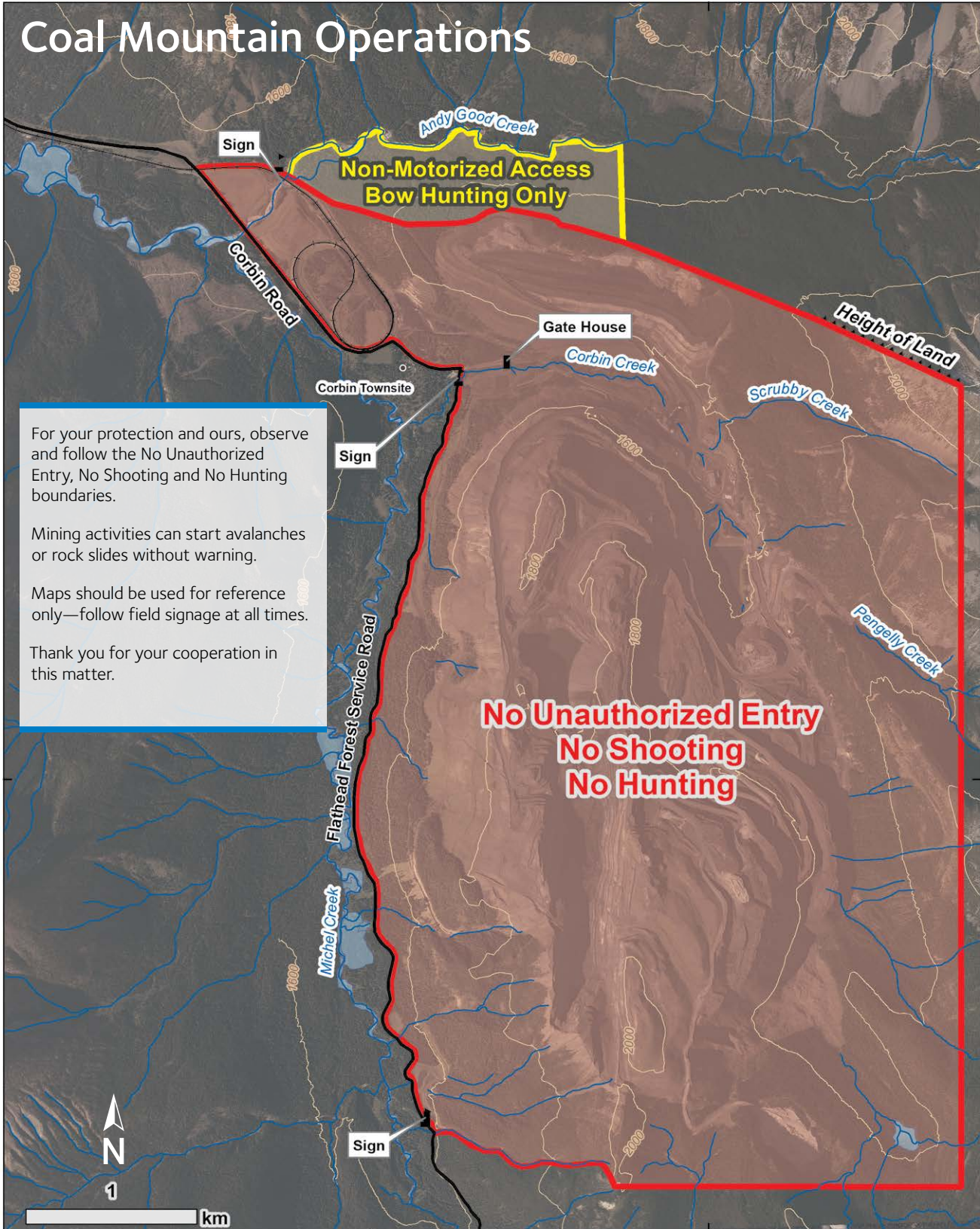
Bow Hunting Only

For more information:
Go to the main gatehouse and contact Loss Prevention on the radio or call Loss Prevention at 250.425.3112.



For more information:
Please visit Elkview Gatehouse between 6 a.m. – 6 p.m.

Coal Mountain Operations



For your protection and ours, observe and follow the No Unauthorized Entry, No Shooting and No Hunting boundaries.

Mining activities can start avalanches or rock slides without warning.

Maps should be used for reference only—follow field signage at all times.

Thank you for your cooperation in this matter.

**No Unauthorized Entry
No Shooting
No Hunting**

For more information:

Go to the main gatehouse and contact Loss Prevention on the radio or call Loss Prevention at 250.425.7389.

650000

655000

660000

Coal Mountain Phase 2 Project

5500000

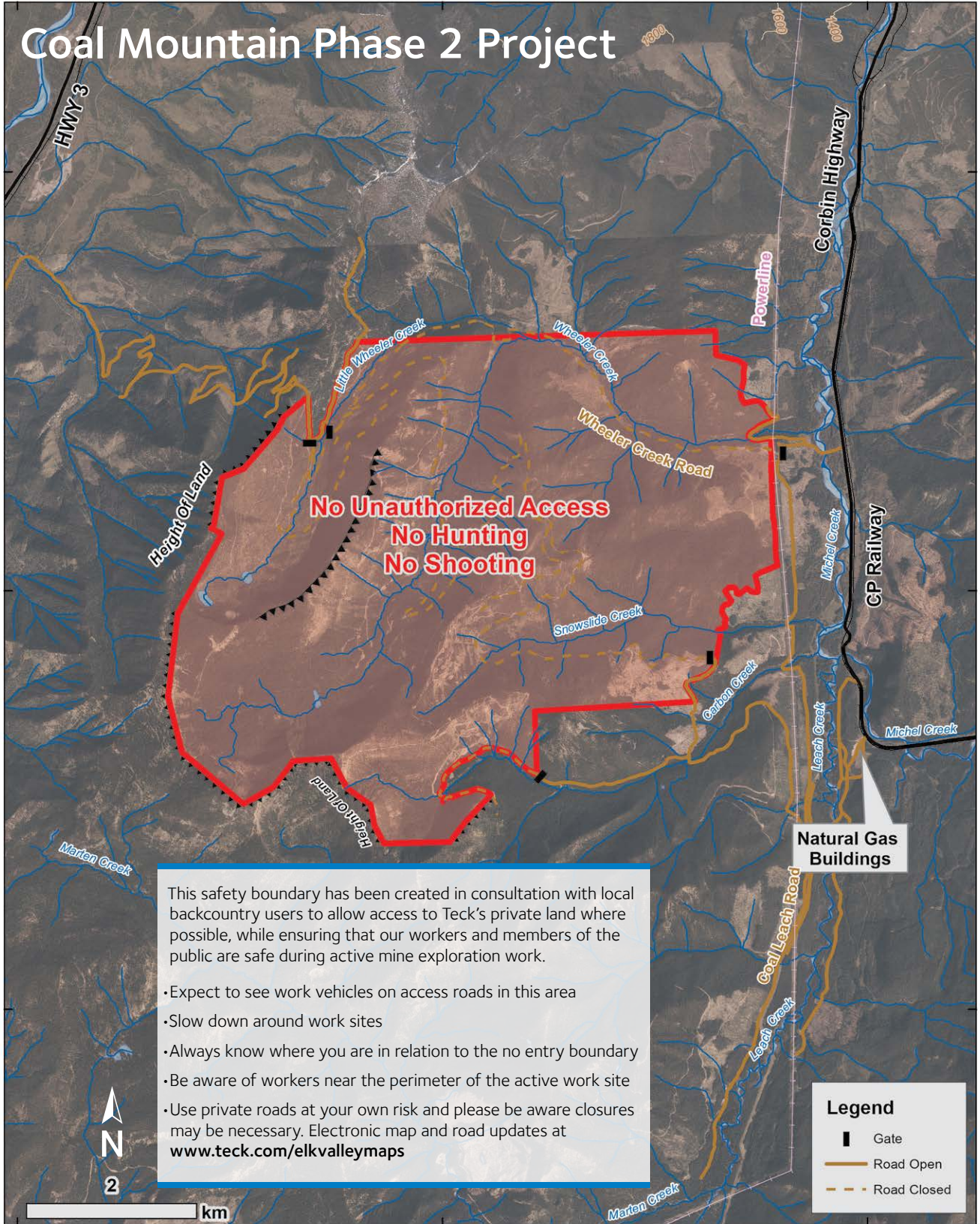
5495000

5490000

5500000

5495000

5490000

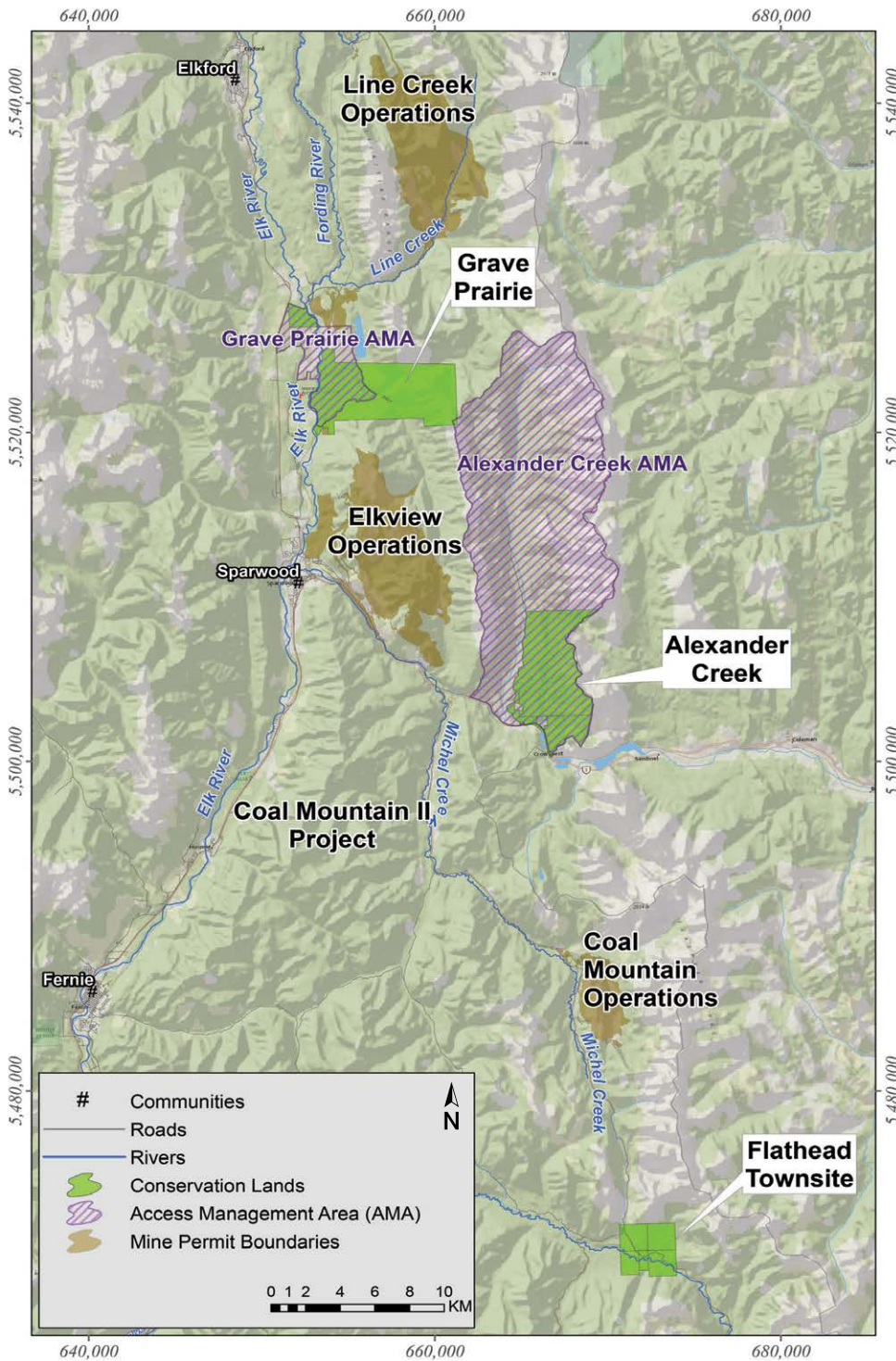


650000

655000

660000

For more information or to report an incident:
Please call 250.425.3350 or ask at the gatehouse.



Teck Conservation Lands

As part of our sustainability efforts, Teck has purchased approximately 7,150 hectares of private lands in the Elk Valley and Flathead River Valley for wildlife and habitat conservation purposes.

The three blocks of land include Flathead Townsite (992 hectares), Alexander Creek (3,098 hectares) and Grave Prairie (3,059 hectares).

Teck is working in cooperation with First Nations, communities and other stakeholders to develop management plans that focus on the conservation of key habitats for wildlife and fish in the Elk Valley and Flathead River Valley for the future.

Please keep conservation in mind when you are enjoying recreation activities on these lands and respect the existing Access Management Areas on the Grave Prairie and Alexander Creek lands.